

MUNICIPALITIES



CHALLENGES

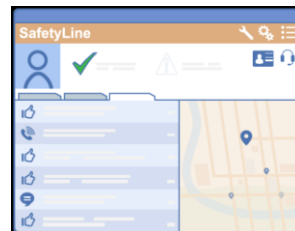
Small municipalities face different challenges than other organizations. With cost and industry-leading technology in mind, we can create solutions and products tailored to meet the municipality's needs. MRF's products and solutions have proved valuable to municipalities and organizations of all sizes in the past.

SAFETY

Are your workers using a work alone device? Let us help you improve your worker safety experience by enhancing the capabilities of your current technology and integrating it with your other enterprise systems.

- What if your work alone and AVL locations could be made available to all necessary parties from the same application as all your other spatial information?
- What if your work alone safety solution was not limited to one device type or even one product line? You could employ the best solution for each of your scenarios and seamlessly integrate them together.
- What if one mobile app could provide all your field users with the emergency response information they need regardless of which systems manage that data?

For further information, please view: <https://www.youtube.com/watch?v=yy6g34tlyUY>



SPRAYER SOLUTION

Does your agricultural or environmental department utilize pesticide/herbicide sprayers? Our sprayer solution allows users to map out areas to be sprayed, but also document the area sprayed.

- What if areas were mapped and an app notified the technician where to spray? Mistakes would be reduced.
- What if sprayed areas were documented? It could be evidence in settling disputes and also demonstrate compliance. Employee performance could also be reviewed and monitored.



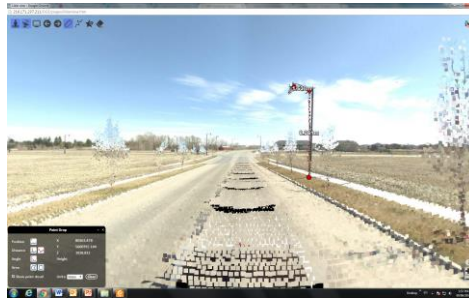
MRF Geosystems

200, 625 14th Street NW
Calgary, Alberta
403-216-5515
1-877-218-5515
sales@mrf.com
www.mrf.com

HTML5 MAP SERVER: GIS + 360° PHOTOS + LIDAR

Does your municipality seek a cost effective GIS solution that is also user friendly and web-based? MRF's HTML5 Map Server is a web-based GIS solution that includes a 360° StreetView, LiDAR overlay, a plugin to monitor field workers and also many various plugins customized for your municipality's needs.

- What if spatial data could easily be integrated with other enterprise systems and accessed online in a user friendly manner and not be limited by licenses and hardware?
- What if maintenance and set up of software was simplified? It would allow for more productive work hours.
- What if mass emergency notifications via phone call, SMS or email could be sent out easily by simply drawing a polygon over the desired notification area on the map?



GRADER BLADE UP/DOWN SENSOR

Does your grader need a sensor to ensure grading requirements are met? MRF's Grader Sensor can detect whether the grader is going up or down and the distance of the movement.

- What if GPS positioning was also implemented with the grader? Contractor costs could be reduced through monitoring time and movement of grader.



FULL RANGE OF GIS SERVICES

MRF offers many spatial services, including GIS Integration & Development Services, GIS Consulting Services and other Spatial Data Services.

ABOUT MRF

Founded in 1992, we have helped thousands of organizations solve common to complex workflow, coordination, and information management problems using GIS software and systems integration.

We do this by dedicating ourselves first to understanding the issues you are experiencing and then applying innovative combinations of our comprehensive spatial technologies.